

# Signal tower base station 48v power supply



## Signal tower base station 48v power supply

---



- ✓ LIQUID/AIR COOLING
- ✓ ON GRID/HYBRID
- ✓ PROTECTION IP54/IP55
- ✓ BATTERY /6000 CYCLES

### Building a Better -48 VDC Power Supply for 5G and Next

Since most telecommunications equipment at the site requires a DC voltage supply, the AC power from either the electric grid or the diesel generator is converted to -48 V DC by the rectifiers.

### Telecom Power System: Understanding -48V DC Power Systems

A -48V DC power system supplies direct current at minus forty-eight volts to telecom equipment. You rely on this system for stable, efficient, and reliable operation of network devices. ...

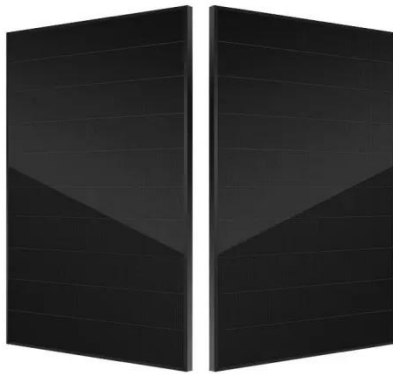


### High-Cycle 48V 60Ah LiFePO4 Battery Pack for Telecom Signal Towers

Designed for uninterrupted power supply in remote or unstable grid areas, this battery ensures 5G/4G base stations maintain connectivity during outages. Its high-temperature resistance (-20°C-60°C) ...

## How to Install a -48V Telecom Power System: A Step-by-Step Guide

Learn how to install a -48V telecom power system step-by-step. This guide covers equipment selection, design considerations, wiring, and essential maintenance tips for reliable ...



## 48VDC Solar DC Power System for Telecom Base Station

It can provide reliable power supply in the case of a power failure completely in plant or substation. The traditional DC systems connect battery pack and run with float charging mode. The new DC system ...

## Build better -48 VDC power for 5G and next generation

Telecommunications and wireless network systems typically operate on a -48 VDC power supply. Because DC power is simpler, a backup power system can be built using batteries ...

Warranty  
**10 years**

LiFePO<sub>4</sub>

Intelligent BMS

Wide Temp:  
-20°C to 55°C



## 48V 10A Tower Base Station Communication Power Supply DC



It can be widely applied to DC signal equipment such as DC charging pile and DC power supply. Equipped with one channel RS485 communication interface, this instrument supports MODBUS-RTU ...

## Signal tower base station 48v power supply

· In telecommunications, +48V DC power is used to provide reliable and efficient power to various equipment such as base stations, antennas, and signal amplifiers.

### Applications



## Why Do Telecom Base Stations Use -48V DC Power?

In modern communication networks--from 4G and 5G to future 6G--mobile base stations form the backbone of wireless connectivity. Behind this infrastructure lies a seemingly minor yet critical design ...

## Contact Us

For catalog requests, pricing, or partnerships, please visit:

<https://www.kidsandparents.pl>

