

# Solar inverter ATE test



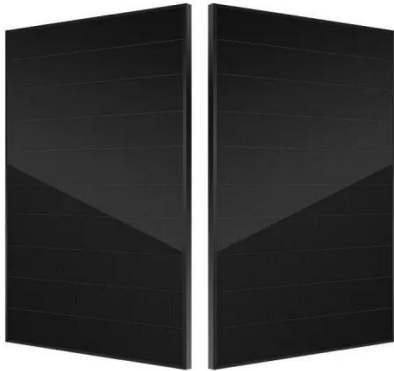
## Overview

---

In this video, we take you inside one of the most critical stages of our quality-assurance system: the Pre-Aging ATE Test Zone. This is the first reliability checkpoint in our intelligent production line, and only products that pass this rigorous screening are allowed to proceed. Autotest is at the forefront of renewable energy testing, providing multi-functional Automated Test Equipment (ATE) specifically designed for Utility Class Solar Generation inverter testing applications. Our comprehensive testing solutions ensure the reliability and performance of critical power. PV simulation provides a reliable solution to bypass unpredictable weather conditions by using a programmable DC power source to emulate the real-world behaviour of photovoltaic arrays. Instead of relying on actual sunlight, the simulator generates programmable I-V and P-V curves that reproduce how. Testing PV inverters requires engineers to verify the performance of the inverter's maximum power point tracking (MPPT) algorithms and circuits. MPPT algorithms are complex, and under-the-sun testing at different temperatures and irradiance conditions is difficult, expensive, and time-consuming. 1, UL1741, GB/T 19939, NB/T 32004, CGC/GF004/GF035 preliminary test requirements. Holding a significant presence in.

## Solar inverter ATE test

---



### MesPal Smart Inverter Production Line: Inside Our Strict ATE Testing

Welcome to the MesPal Smart Manufacturing Center, where every inverter begins its journey toward becoming a reliable, high-performance energy product. In this video, we take you inside one of the

### PV Inverter Test System < Chroma

Our test instrumentation provides means to further the development, reliability, and validation of grid-tied, off-grid, and hybrid solar PV inverters that will eventually be used in commercial and household ...



50KW modular power converter



**Flexible Configuration**

- Modular Design, Expanding as Required
- Small/Light, Wall Mounted
- Installed in Parallel for Expansion

**Powerful Function**

- Support PV+ESS
- Grid Support, Equipped with SVG Technology
- On-Grid and Off-Grid Operation

**Reliable Protection**

- Outdoor IP55 Design
- Sufficient Protection Functions Equipped

### Renewable Energy Inverter Testing

Autotest is at the forefront of renewable energy testing, providing multi-functional Automated Test Equipment (ATE) specifically designed for Utility Class Solar Generation inverter testing applications.

## Inverter PCBA & EOL ATE Testing Solutions , Exeliq

The Inverter PCBA/EOL ATE system offers efficient testing for inverter circuit boards, ensuring fault detection, performance validation, and reliability assessment. It enhances product quality,

...



## How to Perform PV Inverter Testing , ACE Test Labs

Learn how to perform PV inverter testing to ensure efficiency, safety, and compliance. Explore key procedures, standards, and tools for accurate solar power system evaluation.

## ATE Test Equipment For CSE (YT) PCS

CSE (YT) introduce new ATE test equipment for Solar inverter and Battery production Line



## How to Perform PV Inverter Testing , Keysight

Learn how to use a PV simulator to test your PV inverter designs for maximum



power conversion.

## PV Simulation

Choose ATE system power supply by ActionPower to perform comprehensive PV emulation for solar inverter testing including micro-inverter, grid-tied inverters and hybrid inverters



## Chroma Photovoltaic/Inverter Test & Automation Solutions

Chroma provides PV inverter testing solutions based on its thirty years of experience in power electronics testing. Meets IEEE1547, 1547.1, UL1741, GB/T 19939, NB/T 32004, CGC/GF004/GF035 preliminary test ...

## How to Test an Inverter: A Step-by-Step Guide , Mingch

By following standard inverter testing procedures, you can verify its

performance, efficiency, and safety. This guide breaks down the inverter testing process step by step -- from ...



---

## Contact Us

For catalog requests, pricing, or partnerships, please visit:  
<https://www.kidsandparents.pl>

