

Solar inverter automatically connects to the Internet and disconnects from the Internet



Overview

This article provides comprehensive troubleshooting tips to assist you in resolving WiFi connectivity issues with your solar inverter. Solar inverters are essential components of solar systems, converting DC power generated by solar panels into AC power compatible with the electricity grid. However, establishing and maintaining a. But every day since I connected it, it drops the link overnight and does not reconnect. However, your inverter is still working. For example, weak signal or. Scroll to the bottom of any page to find a sun or moon icon to turn dark mode on or off! I have a SolarEdge SH5000 inverter, with display, and 18 panels. During the day, you should be able to see a solid Green LED next to the display. The display should also show a read out of what power is currently being generated.

Solar inverter automatically connects to the Internet and disconnects

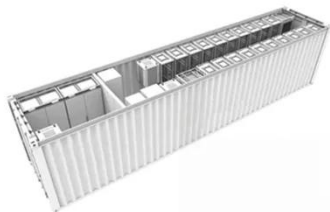


How to Fix Wifi Connected No Internet on Solar Inverter

Common reasons why your solar inverter shows WiFi connected but no internet include network configuration issues, router problems, or inverter-specific errors. Here are steps to diagnose ...

Wi-Fi Troubleshooting Guide - mySolarEdge

Before configuring the Wi-Fi, we recommend that you verify the inverter is working and responsive by checking for illuminated LEDs on the inverter. If the inverter is not responsive, contact your ...



r/solar on Reddit: SolarEdge inverter connects to wifi but drops

Since I was upset about losing a month's production without any alert, I decided to connect the replacement. It has no problem establishing a link to my wifi, and happily stays connected to it all ...

Smart Photovoltaic Inverters: How Automatic Internet Connectivity

Modern photovoltaic inverters that automatically connect and disconnect from the Internet are transforming solar energy management. Think of them as smart traffic controllers for your solar ...



LFP12V100



SolarEdge SH5000 Lost Internet Connection

I have a SolarEdge SH5000 inverter, with display, and 18 panels. About 5 years old. I lost internet connectivity for monitoring last week on 5/16 at noon. System is still producing, as I can ...



Plant Offline (Wi-Fi)

Depending on the model, Sungrow Inverters either come with a Wi-Fi dongle or an eShow Screen that plugs into the bottom of the inverter, both of which can be used to connect the inverter to the internet ...



Fronius inverter showing offline in SolarWeb? What to do now.

After checking your inverter and confirming the solid green LED, you may

want to try to reconnect your inverter back to the internet. Attached below is a link for an instructional step by step video on how to ...



Tips for Troubleshooting Solar Inverter WiFi Connectivity Issues

Many modern solar inverters feature WiFi connectivity, allowing for remote monitoring and control. However, establishing and maintaining a stable WiFi connection can be challenging at times. This ...



Ways or Steps to Reset SolarEdge Internet by Solare Energy

To reestablish an internet connection to the SolarEdge Inverter conduct a power cycle of the inverter and networking components. To conduct this power cycle follow these simple steps: Turn ...

Common Solar Inverter Problems and How to Fix Them

Solar inverter problems can cause performance dips, system outages, and even long-term damage to your setup if left unaddressed. In this article, we'll break down the most common ...



Contact Us

For catalog requests, pricing, or partnerships, please visit:
<https://www.kidsandparents.pl>

