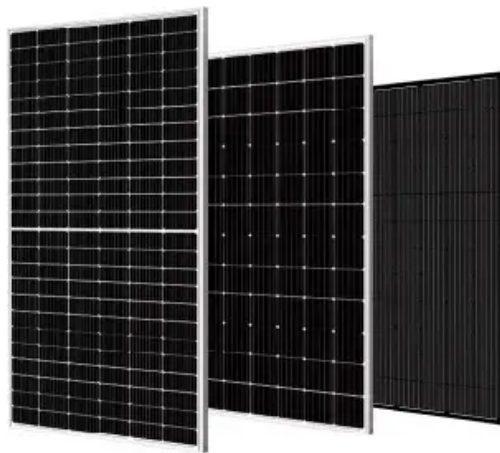


Solar panel roof load bearing



Solar panel roof load bearing



Assessing Your Roof's Load-Bearing Capacity for Solar Panels

Calculating your roof's load-bearing capacity involves assessing the weight of the solar panels, considering structural support elements, and potentially reinforcing the roof to meet the ...

Are Solar Panels Too Heavy For Your Roof?

Load Calculations: They calculate the total weight of the system against your roof's specific load-bearing capacity.
Waterproofing: Installers use "flashing" to ensure that the holes drilled for the ...

Sample Order
UL/KC/CB/UN38.3/UL



What Solar Installers Should Know About Roof Load Capacity

Roof load capacity is a critical consideration for solar installers embarking on solar panel installations. By conducting thorough assessments, collaborating with structural engineers, and ...

How to run a structural load analysis for rooftop PV racking

Prevent costly roof failure. This guide details the critical steps for a structural load analysis of PV racking, from wind load calculations to assessing your roof's capacity for a secure solar ...



- 50KW/100KWH
- HIGHER POWER OUTPUT IN OFF-GRID MODE
- CONVENIENT OPERATION & MAINTENANCE
- PRE-WIRED

Roof Load with Solar Panels: What You Need to Know

Conclusion: Installing solar panels is a valuable investment in sustainable energy, but it is essential to carefully consider the suitability of your roof. A thorough assessment of load-bearing capacity, pitch, ...



Weight of Solar Panels on Roof: Understanding Mass, Roof Load, ...

Solar panels add valuable energy to homes, but their weight matters for roof integrity. This article explains typical panel weights, how mounting hardware contributes to total mass, and ...



- Voltage range: 691.2-947.2V
- >6000 cycles (100%DOD)
- Rated battery capacity: 216KWH (customizable)
- EMS communication: 4G/CAN/RS485

Structural Requirements for Solar Panels -- Exactus Energy



Load-bearing capacity: You can't just slap panels on a roof and call it good. Someone--an engineer, a pro--needs to check if the roof can actually handle the weight.

Roof Load Distribution Calculations for Solar Panel Structural ...

This innovation decreases the overall load on the roof, which is essential for ensuring the structural safety of older or weaker roofs. For instance, thin-film solar panels weigh significantly less ...



Solar Panel Roof Requirements: What You Need to Know

Key Takeaways Understand the importance of roof suitability for optimal solar panel performance and longevity. Evaluate your roof's orientation, pitch, and condition to ensure maximum ...

7 Steps to Calculate Roof Load Capacity for Solar Panels (Ensure ...

Discover how to safely install solar panels by calculating your roof's load capacity, considering dead and live loads, and determining if structural reinforcement is needed.



Contact Us

For catalog requests, pricing, or partnerships, please visit:
<https://www.kidsandparents.pl>

