

Supervision and acceptance of photovoltaic support installation



Overview

Key strategies include: 1) Developing a comprehensive project plan that outlines specific goals and responsibilities, 2) Conducting regular inspections at various stages of installation to identify issues early, 3) Providing proper training and resources to the workforce involved in. Key strategies include: 1) Developing a comprehensive project plan that outlines specific goals and responsibilities, 2) Conducting regular inspections at various stages of installation to identify issues early, 3) Providing proper training and resources to the workforce involved in. Engineering, Procurement and Construction (EPC) contractor. This is the process of assuring safe operation of a solar photovoltaic (PV) system and making sure it is compliant with environmental and planning requirements, meets design and performance objectives, and that any tests meet contractual. Warranty Protection Requires Documentation: Most solar equipment manufacturers require documented commissioning procedures to validate warranty coverage, and without proper commissioning documentation, system owners face voided equipment warranties worth tens of thousands of dollars, insurance. Weather-conscious equipment selection and design for photovoltaic (PV) systems can result in a longer PV lifetime and improved system durability. This page contains considerations for structural and site-related design, electrical equipment, PV modules, and fasteners, considerations unique to the. This report is available at no cost from the National Renewable Energy Laboratory (NREL) at www.nrel.gov. National Renewable Energy Laboratory, Sandia National Laboratory, SunSpec Alliance, and the SunShot National Laboratory Multiyear Partnership (SuNLaMP) PV O&M Best Practices. For solar EPC contractors, developers, and commercial users, a detailed solar PV system commissioning checklist is essential before making the final payment. Key strategies include: 1) Developing a comprehensive project plan that outlines specific goals and.

Supervision and acceptance of photovoltaic support installation



Best Practices for Operation and Maintenance of Photovoltaic and ...

The DC system determines system power capacity and energy production, whereas the inverter and the AC system has the greatest impact on system reliability. There can be several single points of failure in the AC ...

Best practices for solar system commissioning and acceptance

Engineering, Procurement and Construction (EPC) contractor. This is the process of assuring safe operation of a solar photovoltaic (PV) system and making sure it is compliant with environmental and planning ...



How to control solar energy installation supervision

The effective supervision of solar energy installation involves ensuring compliance with regulatory standards, maintaining safety protocols, and verifying the quality of workmanship.

Key Points of Photovoltaic Panel Supervision and Acceptance

This case study highlights the importance of understanding and integrating various solar panel components to create an efficient and reliable solar energy system.

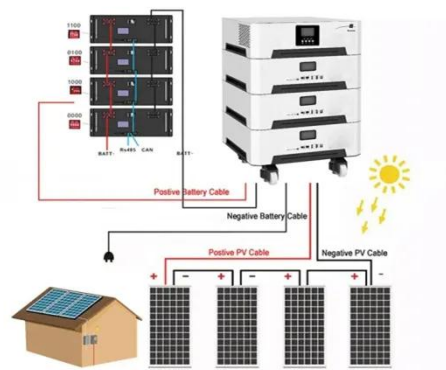


PV SYSTEMS PLANNING AND CONSTRUCTION SUPERVISION

We rely on our expertise in irradiation assessment, many years of experience with module and inverter technology, the assessment of assembly systems, and the technical acceptance of PV systems.

Life Cycle of Photovoltaic Systems: Install and Commission a

This page contains considerations for structural and site-related design, electrical equipment, PV modules, and fasteners, considerations unique to the PV system type (rooftop, ground-mounted, carport), and ...



Solar PV System

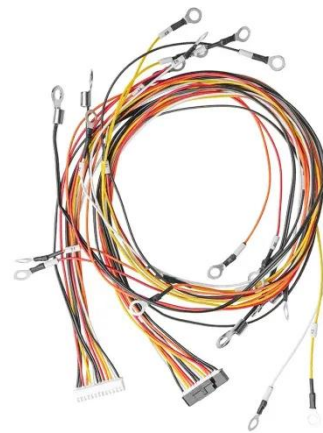
Commissioning Checklist: Ensuring Proper Installation

Ensure safety, efficiency, and compliance with a complete solar PV system commissioning checklist before final payment to maximize project performance.



Detailed Construction and Acceptance Process of Commercial and

The construction and acceptance of commercial and industrial PV systems is a complex and meticulous process, requiring collaborative efforts and coordination from businesses, system integrators, and grid ...



Photovoltaic support installation acceptance assessment

The assessment of photovoltaic (PV) installation potential in industrial complexes is critical for advancing renewable energy objectives, particularly in urbanized settings like Gyeonggi



Solar Commissioning Guide: Complete PV System Testing

Comprehensive guide to solar commissioning procedures, testing requirements, and performance verification for residential, commercial, and utility-scale PV systems.



Contact Us

For catalog requests, pricing, or partnerships, please visit:
<https://www.kidsandparents.pl>

