

The civil air defense generator room can naturally take in air



Overview

Effective Date: 2 Sep 2024 The FCC can either be air-conditioned, naturally ventilated or mechanically ventilated. A common fire. Rather this is a civil defense shelter shelter, spaceship, or submarine the principles for creating a safe and suitable physical environment are very similar. This means the shelter's ventilation systems must. Does it have to only be naturally ventilated?

I've looked at NFPA 110 (2008) but it seems ambiguous. By just typing "indoor generator fresh air requirements" I got multiple hits. You will need both combustion and cooling air which will be cataloged by generator manufacturers. Typically, natural ventilation is considered through two key mechanisms: wind-driven and buoyancy-driven flows. To provide an environment in which personnel can work comfortably and effectively. It is important to note that. NCEL was assigned the task of investigating an -emergency ventilation system that would utilize the effect of gravity on the density differential between shelter air and outside air to induce natural convection air currents to flow.

The civil air defense generator room can naturally take in air



Generator Engine Room Ventilation

It is important to note that cooling air is needed for more than just the engine; the generator intake also requires cool clean air. The most effective way to do this is to provide a ...

Air ventilation in civil defense shelters

However, in a shelter, negative pressure can be catastrophic because it could draw contaminated air inside. The ventilation system in a civil defense shelter is designed to prevent the ...



Closeup Mode in Shelters

The shelter must be airtight, and the air supply system designed in such way that ...

Generator Room Ventilation

Guidelines

The document discusses ventilation requirements for generator rooms. It notes that proper ventilation is necessary to remove heat and fumes, and to provide clean combustion air.



- 50KW/100KWH
- HIGHER POWER OUTPUT IN OFF-GRID MODE
- CONVENIENT OPERATION & MAINTENANCE
- PRE-WIRED



GRAVITY VENTILATION OF UNDERGROUND SHELTERS

The air inducer was designed primarily for shelter use; however, it could be used to ventilate any type of enclosed space that does not have openings to permit the entrance of fresh air.

Kearny Air Pump

A KAP can be used to ventilate such a shelter room if enough well-mixed and distributed air is moving just outside the doorway, or if air from outdoors can be pumped in by another KAP and made to flow ...



The civil air defense generator room can naturally take in air

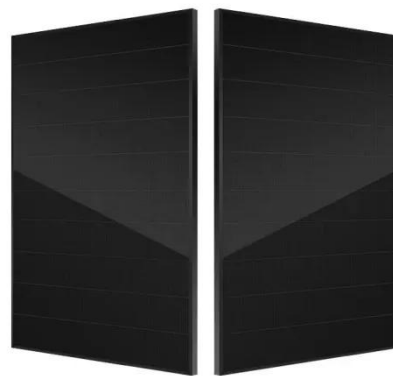
Natural ventilation is the process supplying and removing air from an indoor space without the use of



mechanical systems and is considered a significant engineering challenge in industry. Typically, ...

Influence of air distribution modes in civil air defense basement on

Natural ventilation is a promising approach to provide passive cooling in highly energy efficient buildings. A widely applied method to evaluate the performance of natural ventilation is



DETAILS AND PACKAGING



- 1 USER MANUAL PDF
- 2 RJ45 Cable For RS485/CAN
- 3 Battery in Parallel Cables
- 4 RJ45 TO USB Monitor Cable
- 5 M8 Terminal*4

Generator room ventilation , Eng-Tips

You will need both combustion and cooling air which will be cataloged by generator manufacturers.

A complete set of civil air defense ventilation system installation

1) Air supply system: There is a direct

external ramp, and the ramp is used for natural air intake. There is no direct external ramp, and mechanical air intake is mainly used.



Closeup Mode in Shelters

The shelter must be airtight, and the air supply system designed in such way that positive air pressure (overpressure) is created inside which helps to prevent the contaminated air from entering the shelter.

Contact Us

For catalog requests, pricing, or partnerships, please visit:
<https://www.kidsandparents.pl>

