

The voltage of lithium battery becomes smaller when connected to inverter



The voltage of lithium battery becomes smaller when connected to



Do I need a special inverter for a lithium battery?

Lithium batteries require inverters specifically designed for their voltage range and discharge characteristics. While lead-acid systems allow voltage adjustments by removing battery cells, lithium ...

The Ultimate Guide to Matching Your Lithium Battery and Inverter

Old lead-acid and AGM batteries suffer from something called the Peukert effect and massive voltage sag. The moment you hit them with a heavy inverter load, their voltage collapses.



LiFePO4 Troubleshooting: 5 Fixes for Lithium Battery Systems

It can be a strict low-voltage cutoff, a surge that exceeds the BMS limit, or a simple voltage drop in the cables. Treat this as a short, repeatable test plan. The inverter can click off when ...

PV Problem Troubleshooting: Arrays, Batteries, Inverters & More

If there is voltage on the input side of the inverter but no output side voltage, there is most likely an inverter problem. If the input side voltage and current from the PV system array are ...

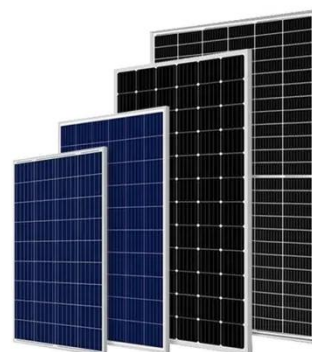


Main Causes of Zero Voltage in Lithium-ion Batteries and How to Fix ...

Lithium-ion battery zero voltage can result from short circuits, faulty chargers, hibernation mode, or aging. Learn diagnosis, revival, and replacement steps.

Understanding the Basics of Connecting Lithium Batteries to Inverters

Ensure that the battery's voltage is within the range that the inverter supports. Most inverters are designed for 12V, 24V, or 48V systems, so the battery should match this requirement.



How to prevent battery drain caused by inverter while on

grid power



All works well, except that when solar charging fades (e.g. overcast days, nighttime), the inverter slowly drains my batteries with about a 1.5 amp draw even when connected to grid power.

The voltage of lithium battery becomes smaller when connected to ...

How to optimize the use of lithium-ion batteries with inverters? To optimize the use of lithium-ion batteries with inverters, it is essential to choose compatible equipment. Users should carefully match ...



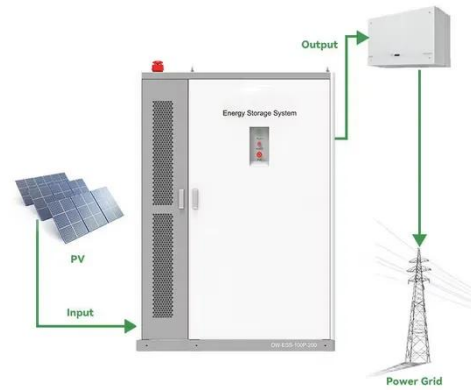
How to Choose the Right Inverter for a Lithium Battery System

Choosing the wrong inverter for lithium battery use can lead to inefficiency, system instability, or even battery damage. Unlike lead-acid systems, lithium batteries operate across a different voltage curve, ...

Lithium battery and inverter

troubleshooting

An inverter has capacitors that will try to charge as soon as a DC source (battery) is connected. This can be a huge amperage draw in a very short period of time that can overwhelm ...



Contact Us

For catalog requests, pricing, or partnerships, please visit:
<https://www.kidsandparents.pl>

