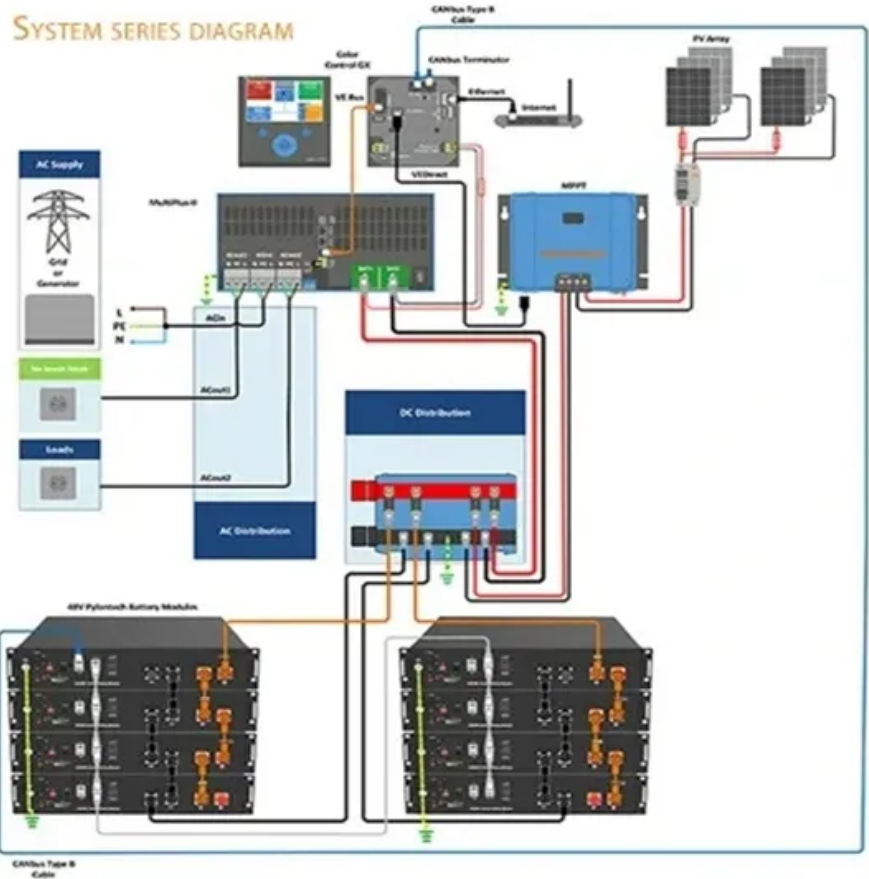


Trina Photovoltaic Panel 395



Trina Photovoltaic Panel 395



Trina Tallmax M TSM-395 DE15M(II) 395W 144-cell Solar Panel

Trina TallMax M TSM-DE15M (II) Features. Trina guarantees their module output to be at or above its nameplate wattage, and they back every module with a 10-year product and a 25-year linear power ...

Trina 395W Solar Panel 120 Cell TRI-TSM-395-DE09C07

This Trina Solar panel produces 395 W of power at 20.7 percent efficiency. High levels of energy output are reached by utilizing the most recent innovations in the solar sector.

To Strive forward No Energy Waste



✓ All in one

✓ 100~215kWh High-capacity

✓ Intelligent Integration



Trina Solar US 395 , EnergySage

All you need to know about the 395 solar panel including rating, cost, efficiency, and warranty terms.

Trina Vertex S 395W Bifacial Mono Black Solar Panel

Utilizing 1/3; split cell, non-destructive cutting and super-dense interconnect technologies, this 395-Watt solar module delivers more power than other modules with the same physical footprint.



TrinaSolar TSM-395-DE15H (II) 395w Mono Solar Panel

Founded in 1997, Trina Solar is the world's leading comprehensive solutions provider for solar energy. We believe close cooperation with our partners is critical to success. Trina Solar now distributes its ...

Trina TallMax Plus 395 Watt Mono Solar Panel

Trina TallMax 395 Watt Mono Solar Panel, TSM-DE15H (ii)395M, clear frame, white backsheet, 144-cell panel offers a 19.7% module efficiency rating. Plug type is MC4, Max series fuse rating is 20AMP, 25 ...



Trina Solar 395 Watt Solar Panel TSM-395-DE15H(II)

[Click to buy Trina Solar TSM-395-DE15H](#)



(II) 395 Watt Solar Panel at the lowest online price! At 395 watts, this is one of the biggest solar panels on the market today.

Trina Solar 395 Watt Mono Solar Panel, Black Frame

Trina Solar > 395 Watt Mono Solar Panel, Black Frame - Bifacial / Transparent Backsheet - Pallet Quantity - 36 Solar Panels

LIQUID COOLING ENERGY STORAGE SYSTEM

EMS real-time monitoring
No container design
flexible site layout



Cycle Life
≥8000

Nominal Energy
200kwh

IP Grade
IP55



 **LFP 48V 100Ah**

Trina Vertex TSM-395 DE09M.05 Solar Panel Black Module

The Trina TSM-DE09M.05 is a 395W monocrystalline solar module from the Vertex S range. Designed with aesthetics in mind, this solar panel boasts excellent colour control thanks to a dedicated cell

...

Trina Solar 395W Panel TSM-395DE09

After comparing several panels in terms

of price, performance, warranty, and overall value, I settled on installing 45 Trina 480-watt panels. I've been using them for over a month now, and they've been ...



Contact Us

For catalog requests, pricing, or partnerships, please visit:
<https://www.kidsandparents.pl>

