

Voltage source inverter current control



Voltage source inverter current control

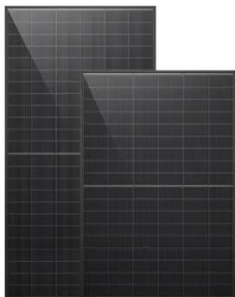


Current-Controlled Voltage Source Inverter

In the current, widely used current-controlled voltage-source inverters, the inverter output ac current is normally controlled in order to control the active and reactive power output of the inverter.

Voltage Source Inverter : Construction, Phases & Its Applications

What is Voltage Source Inverter?
Definition: A voltage source inverter or VSI is a device that converts unidirectional voltage waveform into a bidirectional voltage waveform, in other words, it is a converter ...



Current source inverter vs. voltage source inverter topology

In the medium voltage adjustable speed drive market, the various topologies have evolved with components, design, and reliability. The two major types of drives are known as voltage source ...

A Comprehensive Comparison of Voltage and Current Control

This paper compared the performance of three control algorithms for voltage source inverter (VSI). The Proportional Integral (PI), Proportional Resonant (PR) and the Model Predictive (MP) control ...



Voltage Source Inverter Reference Design (Rev. E)

Control design of such inverter is challenging because of the unknown nature of load that can be connected to the output of the inverter. This reference design uses devices from the C2000 ...

A Contemporary Design Process for Single-Phase Voltage Source ...

This paper presents an overview of contemporary voltage source inverter control system design. Design begins with the theoretical considerations that lead to the creation of the system's differential control ...



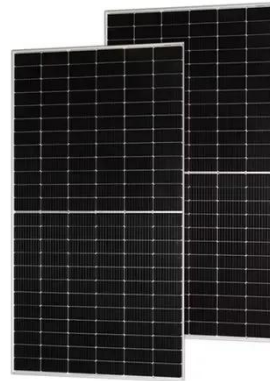
Current Control of a Voltage Source Inverter connected to the ...



This paper proposes a simple current control scheme, based on the combination of deadbeat and PI control, for a three-phase voltage source inverter connected to the grid via an LCL filter.

Current Regulated Voltage Source Inverter , Closed Loop Control ...

Since the magnitude and waveforms of motor currents are independent of changes in motor impedance and source voltage, the inverter essentially operates as a current source inverter.



Predictive Current Control of Voltage Source Inverters Using a ...

hase Voltage Source Inverter (VSI) using a diode-based rectifier has been created. For general-purpose industrial motor drives that use three-phase Alternating Current (AC), the Pulse ...

Predictive Current Control Strategy for Voltage Source Inverter

This control scheme predicts the future load current behavior for each valid switching state of the converter, in terms of the measured load current and predicted load voltages.



Contact Us

For catalog requests, pricing, or partnerships, please visit:
<https://www.kidsandparents.pl>

