

What are the dimensions and weight of a solar panel



Overview

Standard residential solar panels are typically around 5.5 feet wide and weigh between 40 to 50 pounds. However, the exact dimensions depend heavily on the panel's technology, wattage, and the manufacturer's design.

Understanding these specifications is crucial for determining roof. Most residential solar panels in 2025 come in three main configurations: The most common choice for residential installations, 60-cell panels are arranged in a 6x10 grid. Businesses and. This exploration narrows down to two primary sizes of solar panels - 60-cell and 72-cell units - each with distinct specifications that cater to different needs and preferences. The following are some key topics that we will cover: Keep reading to discover all the details about this topic and make an.

What are the dimensions and weight of a solar panel



Solar Panel Size and Weight: A 2025 Guide (with Examples)

Residential solar panels are made to be efficient and small. The majority of residential panels consist of 60 cells with an approximate size of 65 × 39 inches, 17.6 ft² and yielding 370-410W per panel.

Solar Panels Sizes and Weights (All Sizes)

These solar panels differ in both size and weight. On average, a solar panel can provide 15 watts per square foot. Let's start by breaking down the average dimensions of different solar ...



Solar Panel Dimensions and Weight: A Complete Guide , Angi

Solar panels are made up of tiny squares called cells that convert sunlight into electricity. The more cells, the higher the wattage. Most homes use 60-cell panels that are roughly 65-by-39 ...

Detailed Guide to Solar Panel Size & Dimensions

Choosing the proper system is not only about the solar panel dimensions. You should also consider wattage, number of cells, layout possibilities, and energy consumption. Also, your ...



Solar Panel Size & Dimensions Guide 2025 , Complete Specs

Complete guide to solar panel sizes and dimensions. Compare 60-cell vs 72-cell panels, weights, roof space requirements, and installation specs for 2025.

How Big Is a Solar Panel? Size, Weight & Power Explained

Discover the typical size, weight, and power of one solar panel. Learn key specs to choose the right solar panel for your needs.



Solar Panel Size And Weight: A Comprehensive Guide

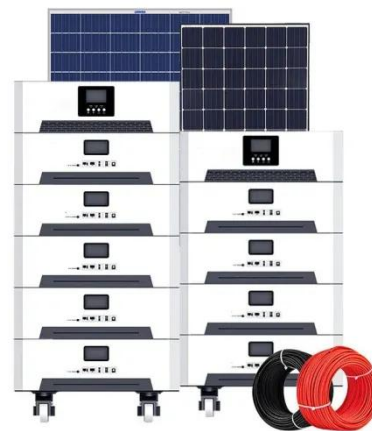
When considering residential solar panels, typical configurations consist of 60 cells measuring approximately 3.25



feet by 5.5 feet. These panels cover an area of 17.62 square feet and weigh

Solar Panel Size And Weight: A Comprehensive Guide

Learn everything about solar system size, solar panel dimensions, and how much solar panels weigh in this complete guide for residential photovoltaic installations.



Solar panel size and weight: everything you need to know

Learn everything about solar system size, solar panel dimensions, and how much solar panels weigh in this complete guide for residential photovoltaic installations.

Standard Solar Panel Sizes And Wattages (100W-500W Dimensions)

To bridge that gap of very useful

knowledge needed, we have compared and averaged the sizes of 100-watt to 500-watt solar panels available on the market. The goal here is to get to the average solar ...



The Ultimate Guide to Solar Panel Size, Weight & Wattage (2025)

Find the exact solar panel size & weight in our 2025 guide. Our complete chart compares models by ft/cm and lbs/kg to help you plan your installation.

Contact Us

For catalog requests, pricing, or partnerships, please visit:
<https://www.kidsandparents.pl>

