

What circuit breaker is used for photovoltaic combiner box



Overview

Since PV systems operate on DC power, DC circuit breakers are used in combiner boxes. DC circuit breakers are specifically designed to handle the unique characteristics of DC electricity, such as the absence of zero - crossing points in the current waveform. These critical components combine multiple solar array strings while providing overcurrent protection, serving as the first line of defense in your. Because it is a 150v max Victron, I'm going with 2 pairs series up to a combiner box. I've seen these Trina. A combiner box is an essential part of a solar power installation that combines the electrical output from multiple solar panels or strings of panels. Each part helps keep your solar system safe.

What circuit breaker is used for photovoltaic combiner box



PV Combiner Box with Circuit Breaker: Complete Specification

A pv combiner box with circuit breaker is an electrical enclosure that consolidates multiple photovoltaic source circuits into a single output circuit while providing individual circuit ...

Solar System Circuit Breakers Comprehensive Usage Guide , BENY

Isolation & Switching: It offers a manual point of disconnection, which enables maintenance personnel to safely isolate the PV array, battery bank or solar inverter to service without the danger ...



What is PV Combiner Box Components?

The type of fuse used for PV combiner boxes is the gPV fuse (General-purpose Photovoltaic Fuse). They are generally categorized based on their voltage ratings, which are ...

What is the function of the circuit breaker in a combiner box?

Since PV systems operate on DC power, DC circuit breakers are used in combiner boxes. DC circuit breakers are specifically designed to handle the unique characteristics of DC electricity, such as the ...



Photovoltaic AC combiner box detailed explanation

It is internally equipped with input circuit breakers, output circuit breakers, and AC lightning arresters. Optional intelligent monitoring instruments (monitoring system voltage, current, power, electrical ...

How to choose the right circuit breaker for a combiner box?

DC circuit breakers are used to protect the direct current output from the solar panels, while AC circuit breakers are used after the inverter to protect the alternating current output.



The Ultimate Guide to Solar Combiner Boxes: From Basics to ...

Energy storage(KWh)

102.4kWh

Nominal voltage(Vdc)

512V

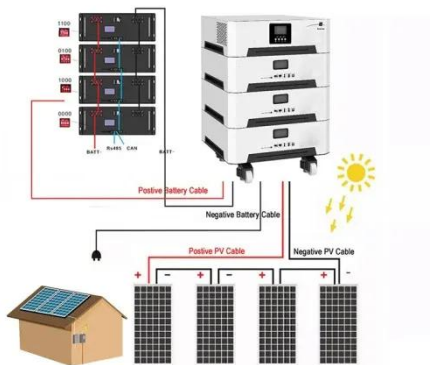
Outdoor All-in-one ESS cabinet



Here are the key components typically found in solar combiner boxes: DC Circuit Breakers. Function: Protects the circuits from electrical faults by interrupting the flow of current in ...

Analysis of key components of solar photovoltaic combiner box

Pick the right fuses and circuit breakers for your solar panels. These devices stop too much current from flowing. This keeps your equipment safe. It also helps your solar panels last longer. You can use ...



Combiner Boxes, Fuses, and Breakers: Solar Protection Made Simple

Combiner boxes, fuses, and breakers work together to protect your solar system by managing wiring, preventing overloads, and ensuring safety. The combiner box consolidates multiple ...

Advice on breakers for PV for a DIY combiner box

When it comes to current rating, 15A DC breakers are perfect for your setup. They match well with your 12AWG wire protection needs and can handle those cold-weather current spikes ...



Contact Us

For catalog requests, pricing, or partnerships, please visit:
<https://www.kidsandparents.pl>

