

What does an uninterruptible power supply for a communication base station look like



Overview

Consider the type of standby power supply: UPS (uninterrupted power system): UPS system is a common choice of standby power supply for communication base stations, which can provide continuous power supply when the power grid is cut off to ensure the normal operation of communication. Consider the type of standby power supply: UPS (uninterrupted power system): UPS system is a common choice of standby power supply for communication base stations, which can provide continuous power supply when the power grid is cut off to ensure the normal operation of communication. These systems ensure a stable and uninterrupted power supply, which is critical for the operation of telecommunication networks. Without them, communication services would falter during power outages or fluctuations. Their role extends beyond just powering equipment; they safeguard connectivity. This article clarifies what communication batteries truly mean in the context of telecom base stations, why these applications have unique requirements, and which battery technologies are suitable for reliable operations. The phrase “communication batteries” is often applied broadly, sometimes. An uninterruptible power supply (UPS) or uninterruptible power system is an electrical unit that provides power for computers, telecommunication equipment, etc.

What does an uninterruptible power supply for a communication ba



Uninterruptible power supply

Overview
Common power problems
Technologies
Other designs
Form factors
Applications
Harmonic distortion
Power factor

An uninterruptible power supply (UPS) or uninterruptible power source is an electrical apparatus that provides emergency power to a load when the input power source or mains power fails. A UPS differs from an auxiliary or emergency power system or standby generator in that it will provide near-instantaneous protection from input power interruptions, by supplying energy stored in batteries, supercapacitors, or flywheels. T...

A Beginner's Guide to Understanding Telecom Power Supply Systems

Telecom power supply systems, particularly UPS systems, ensure that communication networks remain operational even during a power failure. A UPS, or uninterruptible power supply, ...



Uninterruptible Power Supply: What It Is and How It Works



This article introduces the working principles of uninterruptible power supply, main types including standby (offline) UPS, line-interactive UPS, online (double-conversion) UPS, what to ...

Understanding Uninterruptible Power Supplies (UPS): A ...

By understanding the different types of UPS systems, their components, and applications, and by following best practices for selection, installation, and maintenance, you can protect your ...



Uninterruptible power supply

An uninterruptible power supply (UPS) or uninterruptible power source is an electrical apparatus that provides emergency power to a load when the input power source or mains power fails.



UPS for Telecom Applications [Cell Towers & WISP]

This type of site needs a multi-day power backup that will provide needed energy until power from utilities is restored.

Adding UPS backup to your transmitters will significantly improve your network ...



Outdoor Cabinet BESS
50 kWh/500 kWh Battery Storage System
Industrial and Commercial Energy Storage



-  **All In One**
Integrating battery packs
-  **Intelligent Integration**
Integrated photovoltaic storage cabinet
-  **High-capacity**
50-500kWh
-  **Rated AC Power**
50-100kW
-  **Degree of Protection**
IP54
-  **Altitude**
3000m(>3000m derating)
-  **Operating Temperature Range**
-20~60°C(Derating above 50 °C)

Communication Batteries: Why Telecom Base Stations Have Unique ...

The phrase "communication batteries" is often applied broadly, sometimes including handheld radios, emergency devices, or general-purpose backup batteries. In practice, when ...

Uninterruptible Power Supply (UPS): Block Diagram & Explanation

What is a UPS (Uninterruptible Power Supply)? An Uninterruptible Power Supply (UPS) is defined as a piece of electrical equipment which can be used as an immediate power source to the ...



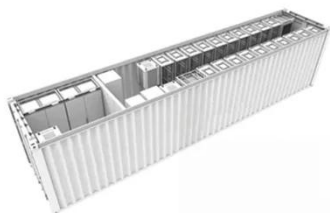
Communication Base Station Backup Power Selection Guide

Choosing the appropriate standby power supply is very important for the stable operation of the communication base station. This article will introduce how to select an appropriate backup ...



Requirements for UPS Power Supply in Communication Base Stations

The integration of UPS power supplies with the communication industry, coupled with the specific requirements for high-temperature and high-altitude environments, contributes to ensuring ...



Guide to Selecting UPS Power Supply for Base Stations

Learn how to choose the right UPS power supply for base stations to ensure uninterrupted operation and protection of critical telecommunications equipment.

Contact Us

For catalog requests, pricing, or partnerships, please visit:

<https://www.kidsandparents.pl>

