

# What is the annual power generation of the wind power station



## Overview

---

A single wind turbine can generate around 6 million kWh of electricity annually, meeting the energy demands of 1,500 households. Turbines can produce between 172 to 11,300 kWh per day, depending on wind speed and turbine design. Annual electricity generation from wind is measured in terawatt-hours (TWh) per year. This includes both onshore and offshore wind sources. From my experience managing utility-scale wind projects, I've consistently observed that site-specific factors—such as average wind. We will analyze the generating capacity of wind turbines, wind speed, geographic location and other factors that can affect the amount of energy that can be produced in a year. The faster the wind, the more energy can be generated. China's onshore wind capacity tripled from 2019 to 69 GW, whereas the United States' capacity doubled to 17 GW: these two countries together accounted for 79% of. A wind power class of 3 or above (equivalent to a wind power density of 150–200 watts per square meter, or a mean wind of 5.

## What is the annual power generation of the wind power station

---

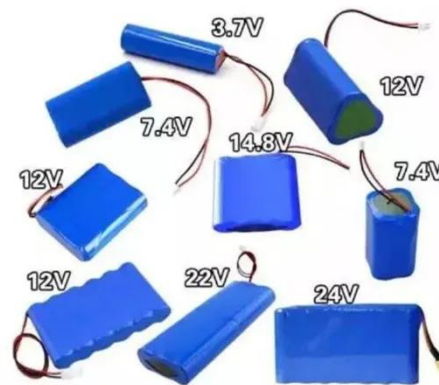


### Annual Capacity Of A Wind Turbine Calculator

The Annual Capacity of a Wind Turbine Calculator is designed to estimate the annual energy production (AEP) of wind turbines based on their rated power, capacity factor, and the ...

### How much energy a wind turbine produces and when it produces it

The first and simplest data to analyze is the annual production of electricity from wind energy. Source: FENR elaboration from Terna S.p.A. data. Looking at the production data, it is quite easy to imagine ...



### Electricity generation from wind

Total annual U.S. electricity generation from wind energy increased from about 6 billion kilowatthours (kWh) in 2000 to about 434 billion kWh in 2022. In 2022, wind turbines were the source ...

## Wind power , Description, Renewable Energy, Uses, Disadvantages

By 2022 wind was contributing more than 7 percent of the world's total electricity and accounted for more than 10 percent ...



## How Much Energy Does a Wind Turbine Produce?

Every year, wind turbines produce about 434 billion kilowatts (kWh) of electricity a year. Just 26 kWh of energy can power an entire home for a day. Wind is the third largest source of ...

## How Much Energy Does A Wind Turbine Produce?

There are a lot of factors that determine how much energy your wind turbine produces. We go through the major factors and highlight what's important.



## How Much Electricity Does a Wind Turbine Produce?

On average, a single wind turbine produces over 6 million kilowatt-hours of electricity annually, which is enough to

power around 1,500 households ...



---

## Wind Energy Calculator

Estimate your wind turbine's annual energy production, cost savings, and environmental impact. Learn how wind energy can advance ecological ...



---

## Wind Power Generation

Offshore wind generation growth amounted to 25 TWh (+29%) in 2020, with capacity additions of 6 GW, the same as in 2019. Overall, 1 592 TWh of electricity were generated from wind installations in ...

---

## Wind power generation, 2025

Wind power generation, 2025 Annual electricity generation from wind is measured in terawatt-hours (TWh) per year. This includes both onshore and

offshore wind sources.

Lower cost  
larger system

20kwh  
30kwh

Verified Supplier



## How Much Energy Does a Wind Turbine Produce? » 2026

How much energy does a wind turbine produce? The answer to this question depends on the make and size of the wind turbine. We provide some useful information.

## Annual output of a wind farm: How much energy does it generate?

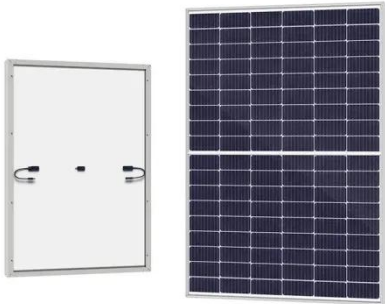
Find out how much energy a wind farm can generate in a year and how it contributes to renewable energy production.



## How Much Energy Does a Wind Turbine Generate

A modern 3 MW onshore turbine operating at a typical 35% capacity

factor produces approximately 7 to 9 million kWh per year --enough to power roughly 2,000-3,000 average homes ...



---

## How Much Energy Will Wind Turbine Generate?

An estimate of the annual energy output from your wind turbine, kWh/year, is the best way to determine whether a particular wind turbine and tower will produce enough electricity to meet your needs.



---

## Wind Energy Factsheet

Wind could provide 20% of U.S. electricity by 2030 and 35% by 2050. 11 Five of the eight Great Lakes states have offshore wind energy potentials that exceed their annual electricity demand (MI, WI, NY, ...

---

## Contact Us

For catalog requests, pricing, or partnerships, please visit:

<https://www.kidsandparents.pl>

