

What is the general voltage of a 200ah solar battery cabinet



What is the general voltage of a 200ah solar battery cabinet

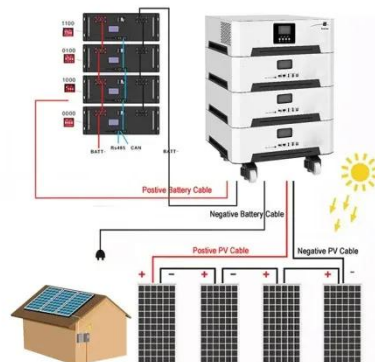


How Many Solar Panels Are Needed to Charge a 200Ah Battery?

Charging a 200Ah battery with solar panels involves several key factors that can significantly impact your setup's performance. Let's break down the essentials: Battery Voltage: ...

How Much Solar Power to Charge a 200Ah Lithium Battery: Setup ...

Battery voltage refers to the electrical potential difference between the positive and negative terminals. A 200Ah lithium battery typically has a nominal voltage of either 12V or 24V. The ...



Solar battery(Gel)

Hold at 14.1V to 14.4V until current drop to under 1.2A for at least 3 hours. Temperature compensation coefficient of charging voltage is -30mV/°C. level and maintain itself in a fully charge status.

What Size Solar Panel To Charge 200Ah Battery? (Incl. Calculator)

What Size Solar Panel To Charge 200ah Battery? Here are some charts on what size solar panel you need to charge 12v and 24v 200ah lead acid or lithium (LiFePO4) battery.

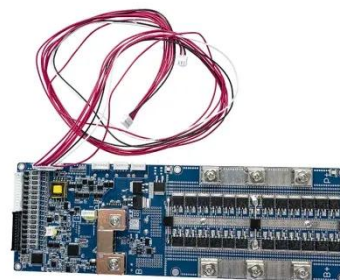


GSL ENERGY 409-716V 200AH Solar ESS Lifepo4 battery ...

If the size and parameters of the product are changed, the latest information will prevail without further notice.

BATTERY CABINET

An existing PWRcell Battery Cabinet can be upgraded with additional modules. Use the graphic below and the chart on the back of this sheet to understand what components you need for your chosen ...



How many solar panels are needed for 12V 200Ah?

Moreover, any solar panel with a nominal output voltage of 12V can charge a 200Ah battery. Still, the time required

for a full charge will vary depending on the solar panel's power output ...



How Much Solar Is Needed to Charge a 200Ah Battery?

Solar voltage must match the battery charging voltage and work with the charge controller. A 12V system is standard for Rack Battery 200Ah packs, while 24V and 48V configurations reduce current ...



Sizing Your System: When to Use a 200ah Lithium Battery

For smaller off-grid dwellings and recreational vehicles, a 200Ah battery, often in a 12V or 24V configuration, hits a sweet spot. A system with 2.4 kWh to 4.8 kWh of usable energy can ...

What is a 200Ah battery? [for beginner]

Generally, the battery voltage for a 200Ah battery is 12V or 24V. A 12V,

200Ah battery is the most common battery available in the market over the globe and it is made of 6 numbers of 2 V

...

50KW modular power converter



Contact Us

For catalog requests, pricing, or partnerships, please visit:
<https://www.kidsandparents.pl>

