

# What is the maximum power of photovoltaic panels



## Overview

---

Today in 2025, we're seeing commercially available panels reaching close to 750W, and early production modules already exceeding 760W, with several manufacturers targeting 800W+ within the next two years. Since 2020, the race to develop the world's most powerful solar panel has escalated rapidly, driven by breakthroughs in cell architecture, the transition to larger N-Type cell formats, and multi-busbar and gapless interconnect designs. What began with Trina Solar 's 600W module debut in 2020. You can now see bifacial photovoltaic panels that reach up to 725W. Many home solar panels give more than 450W. You'll often see it referred to as "Rated Power", "Maximum Power", or "Pmax", and it's measured in watts or kilowatts peak (kWp). Air mass measures the distance that radiation travels as it passes through the atmosphere and varies according to the. The kWp rating, or kilowatts peak rating, is crucial for determining the maximum power output of a solar panel.

## What is the maximum power of photovoltaic panels

---



### Solar-cell efficiency

Overview  
 Factors affecting energy conversion efficiency  
 Comparison  
 Technical methods of improving efficiency  
 See also

The factors affecting energy conversion efficiency were expounded in a landmark paper by William Shockley and Hans Queisser in 1961. See Shockley-Queisser limit for more detail. If one has a source of heat at temperature  $T_s$  and cooler heat sink at temperature  $T_c$ , the maximum theoretically possible value for the ratio of wor...

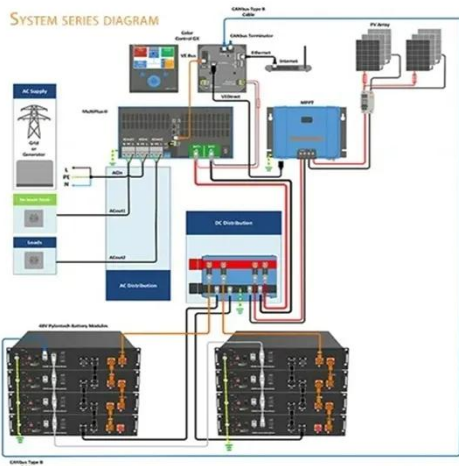
### Solar Panel Ratings Explained

This means that, under ideal conditions, the 100W solar panel could generate between 97 and 103 Watts of power. However, since the power output is directly linked to Solar Irradiance ...



### What is the maximum watt of solar energy? , NenPower

What is the maximum watt of solar energy? The maximum watt of solar



energy typically refers to the highest amount of power that a solar panel can produce under ideal conditions, which is ...

## 20+ Most Powerful Highest Watt Solar Panels

For large commercial tasks, solar panels of 500 watts or higher are common. Meanwhile, for residential setups, the highest wattage solar panels typically range between 400 and 500 watts. ...



**2MW / 5MWh  
Customizable**



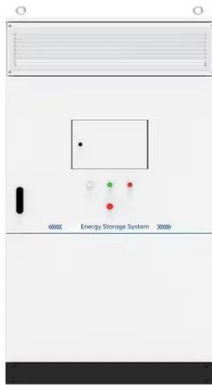
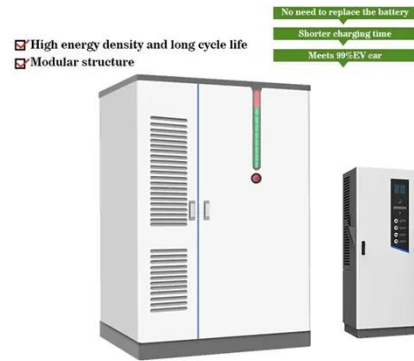
## How To Calculate Maximum Power Of Solar Panel?

To meet energy demands, the number of solar panels required is calculated using the formula  $N = P / (E * r)$ , where N is the number of panels, P is the total power requirement (kW), E is ...

## 20+ Most Powerful Highest Watt Solar Panels

Maximum power rating shows the most electricity a panel can make in perfect lab conditions. You use this number to

compare different panels and plan your solar system.



## Highest Wattage Solar Panels: Everything You Need to Know

In the commercial sector, the highest wattage solar panels currently available on the market are 700W Wattage Solar Panels. These panels, featuring a remarkable 144 half-cut solar cells, maximize power ...

## Most powerful solar panels 2025

Today in 2025, we're seeing commercially available panels reaching close to 750W, and early production modules already exceeding 760W, with several manufacturers targeting 800W+ ...



## What is the solar panel peak power? Watt peak definition

A watt-peak (Wp) is the maximum electrical energy that a photovoltaic panel can supply under standard test conditions. The notion of watt-peak is used to compare the performance of PV

...



---

## Maximum Power Ratings of Modern PV Panels: Understanding How ...

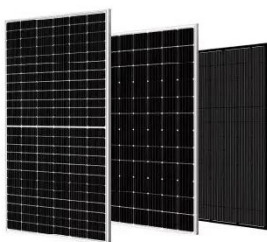
Maximum power rating shows the most electricity a panel can make in perfect lab conditions. You use this number to compare different panels and plan your solar system.



---

## Solar-cell efficiency

Normal photovoltaic systems however have only one p-n junction and are therefore subject to a lower efficiency limit, called the "ultimate efficiency" by Shockley and Queisser.



---

## Highest Watt Residential Solar Panels 2025 [Complete Guide]

Several factors limit most residential solar panels to around 550W maximum

for standard installations: Commercial and utility-scale panels can reach 700W+ because they're designed for ...



---

## Contact Us

---

For catalog requests, pricing, or partnerships, please visit:  
<https://www.kidsandparents.pl>

