

What is the wind speed of the wind turbine tower



What is the wind speed of the wind turbine tower



How Fast do Wind Turbines Spin? (Faster Than You Think)

The speed at which the blades of a wind turbine spin is in direct relation to the velocity of the wind. Let's see just how fast turbines spin.

Wind turbine: what it is, parts and working , Enel Group

The wind turbine (also known as wind generator or wind turbine generator) is a small engineering masterpiece that appears simple at first glance. The most common type is the classic ...



How fast do wind turbines spin ,Freem

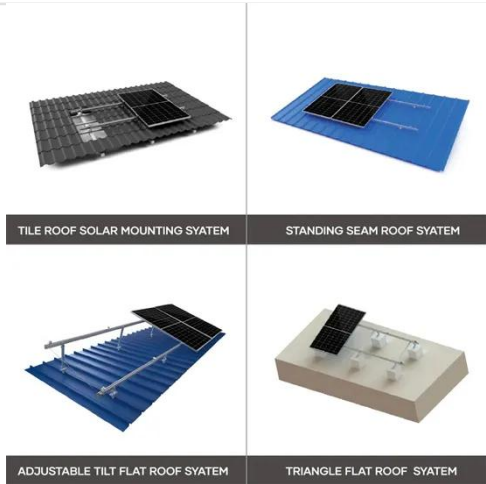
Learn how fast wind turbines spin, blade tip speeds in mph, factors influencing turbine rotation, safety limits, and whether turbines spin without wind or in both directions.

All About Wind Turbine Tower

In general, small electric wind turbine towers need an average annual wind speed of more than four meters per second (4m/s) (9 mph) (less wind required for water-pumping operations).



2MW / 5MWh
Customizable



Wind Turbine Speed

How to measure Wind Speed and how Wind Speed effects the electrical output of a wind turbine. Also find information on anemometers and the Beaufort scale.

How a Wind Turbine Works

Wind Turbine Tower Made from tubular steel, the tower supports the structure of the turbine. Towers usually come in three sections and are assembled on-site. Because wind speed ...



How a Wind Turbine Works

The Power of Wind Wind turbines harness the wind--a clean, free, and widely available renewable energy source--to generate electric power. This

page offers a text version of the ...



Wind turbine

The tower is constructed to hold the rotor blades off the ground and at an ideal wind speed. Towers are usually between 50-100 m above the surface of the ground or water.



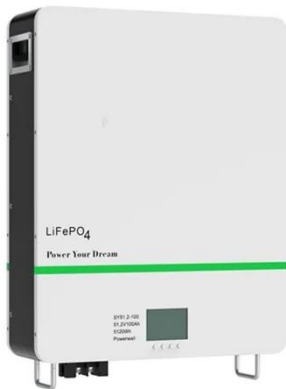
WIND FREQUENTLY ASKED QUESTIONS (V10.09)

The towers are mostly tubular and made of steel. The blades are made of fiberglass-reinforced polyester or wood-epoxy. How Much Wind Is Needed to Power a Wind Turbine? Wind ...

How Fast do Wind Turbines Spin? (Faster Than You Think)

In general, small electric wind turbine towers need an average annual wind speed of more than four meters per

second (4m/s) (9 mph) (less wind required for water-pumping operations).



Wind Turbine Tower Height Power Gain Calculator

Inputs include the known wind speed and height, the proposed tower height, and the shear exponent appropriate for the site. Output is the estimated wind speed at the new height and the power gain ...

Contact Us

For catalog requests, pricing, or partnerships, please visit:
<https://www.kidsandparents.pl>

