

What items are included in the energy storage spot inspection



Overview

This inspection covers a range of components including batteries, inverters, and protective devices. s where only a basic review is necessary. It is likely that most residential PV and ESS will comply with these simple criteria, which address the requirements for PV and ESS in the International Building, Residential, and Electrical Codes, publishe by the International Code Council (ICC). These checklists can be used to highlight “common mistakes” made by installers. Evaluation of thermal management systems, 3. Analysis of discharge and charge cycles. Below is the inspection checklist developed by this working group. Its items are organized generally in order of what an inspector may find during a walk-through of an energy storage site.

What items are included in the energy storage spot inspection



Battery Energy Storage Review & Inspection

Important Notice: The inspection and review items listed above are intended to serve as a general guideline and do not represent a complete list of all code, safety, or installation requirements.

What are the energy storage mechanism inspection items?

The key inspection items include temperature sensors, cooling mechanisms, and insulation materials. Temperature sensors should be accurately calibrated and regularly tested.

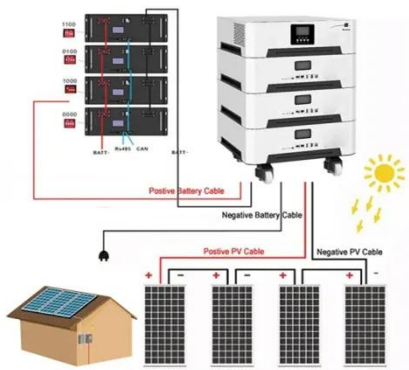


(2023) Energy Storage Field Inspection Checklist Template

Providing an online list of inspection requirements will reduce informational barriers between inspectors and installers, helping to ensure that all items in the inspection process have ...

Energy Storage Systems Installation Inspection Checklist

This inspection covers a range of components including batteries, inverters, and protective devices. The aim is to verify compliance with installation standards, safety regulations, and ...



SED Safety Inspection Items for Energy Storage

Check for wind sock and ensure it is in good condition (Applicable to NaS storage only). Check ambient temperature and humidity to ensure proper operating condition is maintained.

SOLAR AND ENERGY STORAGE SYSTEM

Energy storage systems installed with simple solar systems meeting SolSmart criteria that are less than 15kW consisting of no more than 2 series strings per inverter and no more than 4 source circuits in ...



**Space for Logo and/or Contact
information**



Include all relevant information for a residential rooftop solar PV system or residential ESS field inspection in this checklist. This credit is completed when the field inspection checklist is posted on ...

energy-ready

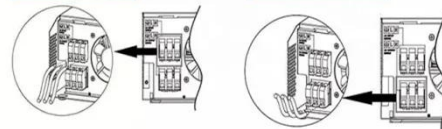
This checklist provides basic guidelines for inspecting most residential Energy Storage Systems (ESS). The intent of using the checklist is to provide transparent and well-defined information to minimize ...

Parallel (Parallel operation up to 6 unit (only with battery connected))



AC input wires

AC output wires



Residential PV and Energy Storage Inspection Guidelines

Use this list of solar and energy storage inspection requirements to create custom checklists in your jurisdiction and improve outcomes from your inspection. Transparency in the ...

Microsoft Word

Below is the inspection checklist developed by this working group. Its items are organized generally in order of what an inspector may find during a walk-

through of an energy storage site. o Is
an overall ...



Contact Us

For catalog requests, pricing, or partnerships, please visit:
<https://www.kidsandparents.pl>

