

What size PV inverter should be used



What size PV inverter should be used

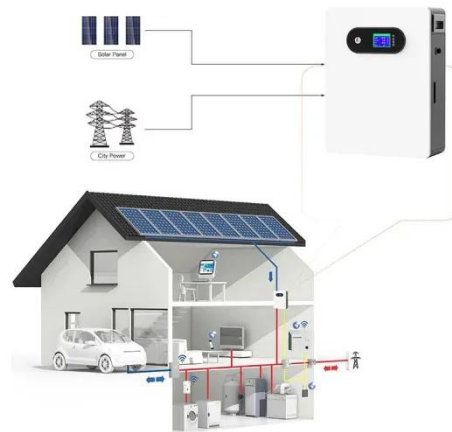


How to Choose the Right Size Solar Inverter: Step-by-Step with Real

Wondering what size solar inverter do I need for your solar system? This guide walks you through calculating inverter size based on panel capacity, power usage, and safety margins.

Complete Solar Inverter Sizing Guide

Get it right and your system runs smoothly for years. In this guide, you'll learn what size solar inverter you need, how to size an inverter for solar systems step by step, how panel output ...



How to Size a Solar PV System and Inverter: A Simple Practical Guide

A well-sized solar PV system and inverter ensure reliable performance, maximum energy savings, and long-term safety. Oversized systems increase unnecessary costs, while undersized ...

Inverter Size Calculator - self2solar

Determining the correct inverter size depends on your solar array's capacity and your household's power needs. Generally, the inverter should be sized to match about 80-100% of your ...



How To Size A Solar Inverter in 3 Easy Steps

A well-sized solar PV system and inverter ensure reliable performance, maximum energy savings, and long-term safety. Oversized systems increase unnecessary costs, while undersized ...

Solar Inverter Sizing Guide: How to Size Your Inverter

Learn how to properly size your solar inverter with our complete guide. Discover the optimal DC-to-AC ratio and avoid costly sizing mistakes.



How To Size A Solar Inverter in 3 Easy Steps

What size solar inverter should you use for your system? In this guide we share how to correctly size a solar inverter in 3

steps.



How to Determine the Right Solar Inverter Size for Your System

Choosing the right solar inverter size isn't just a technical detail--it's one of the most important steps in designing an efficient, cost-effective solar energy system. A perfectly sized solar ...



 LFP 48V 100Ah

What Size Solar Inverter Do I Need? Experts Break It Down

But before you start soaking up the sun, you'll need the right inverter to match your system. This guide breaks down what size solar inverter you actually need--so your setup runs ...

Solar Inverter Sizing Guide for Maximum Efficiency , Mingch

In most cases, the inverter size should

be close to the size of your solar panel system, within a 33% ratio. For example, a 6.6kW solar array often pairs with a 5kW inverter to balance ...



Perfectly Size Your Inverter for Peak Output

Most solar professionals recommend sizing your inverter for solar panels between 75% and 115% of your total panel wattage, with the sweet spot around 1:1.15 --meaning your inverter is

...

Contact Us

For catalog requests, pricing, or partnerships, please visit:
<https://www.kidsandparents.pl>

