

What size inverter should I use for a 100A lithium battery



What size inverter should I use for a 100A lithium battery

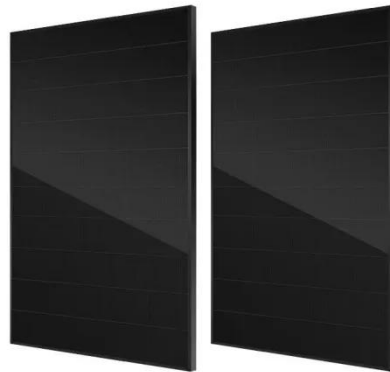


What Size Inverter Do I Need for a 100Ah Battery?

A 100Ah battery typically supports an inverter size up to about 1000 watts for standard applications, balancing efficient runtime and battery health. Selecting the right inverter size depends ...

The Ultimate Guide to Matching Your Lithium Battery and Inverter

For that 2000W inverter, you need a battery setup that can happily deliver over 157A without breaking a sweat. That gives you two main options: a single, high-output battery pack like our ...



What Size Inverter Can I Run Off A 100Ah Battery? Maximize ...

To calculate the wattage, use the formula: $\text{Watts} = \text{Volts} \times \text{Amps}$. For a standard 12V battery, a 100Ah capacity translates to about 1200 watts (12V x 100A). However, in practice, you ...

How to Determine the Right Inverter Size for a 100Ah Battery

Determining the right inverter size for a 100Ah battery is essential for ensuring optimal performance and efficiency in your power system. The inverter must match the power requirements of your devices ...



12V 100Ah Lithium Battery: Best Inverter Size

Tired of sudden shutdowns? Learn how inverter size, BMS limits, and efficiency affect a 12V 100Ah lithium battery and which pure sine inverter to choose.

Best Inverter For 100ah Battery [Updated On

Many users assume that any inverter can handle a 100Ah lithium battery, but my extensive testing showed otherwise. I've compared several models, scrutinizing their compatibility, ...



What Inverter Size is Best for a 100Ah Battery?



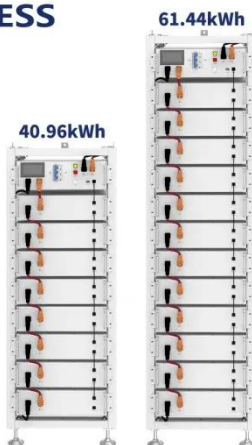
A 12V 100Ah battery can reasonably power an inverter up to 1000W-1200W for short periods. For continuous loads, 500W-800W is more efficient and battery-friendly.

How to Determine the Right Inverter Size for a ...

Determining the right inverter size for a 100Ah battery is essential ...



ESS



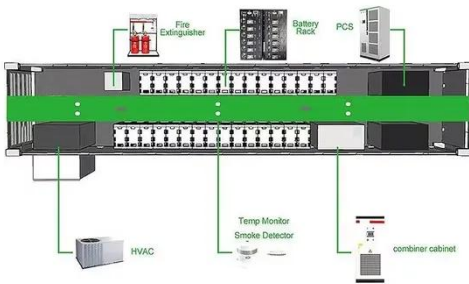
What size inverter can I run off a 100Ah lithium battery?

A 100Ah lithium battery can typically support an inverter up to 1,200W for 1 hour, assuming a 12V system. Actual runtime depends on load wattage and battery voltage. For example, a 600W load ...

Sizing the Right Inverter for 100ah Battery

Step to calculate inverter size for 100ah battery: Calculate the total load you

intend to use and add 20% for a safety margin. Select the inverter type: Choose a pure sine wave inverter for ...



What Size Inverter for 100Ah Battery? - MWXNE POWER

Choosing the wrong size inverter can damage equipment, drain your battery too fast, or shut down your system unexpectedly. In this guide, we'll walk you through what size inverter works ...

Contact Us

For catalog requests, pricing, or partnerships, please visit:
<https://www.kidsandparents.pl>

