

# Which direction should the photovoltaic panels be installed in



## Overview

---

The best direction for solar panels is true south in the northern hemisphere, including the U. These orientations will allow for the most direct sunlight to hit your panels, which helps improve electricity generation and maximizes your electricity bill savings with solar. Both factors work together to determine how much. Proper solar panel orientation and solar panel direction allow your solar system to generate the most electricity throughout the day.

## Which direction should the photovoltaic panels be installed in

---



### Best Direction for Solar Panels to Maximize Savings -- SolarReviews

In the United States, the best direction for solar panels to face is south as it exposes them to the most sun and allows them to produce the most electricity possible. Solar panels that face east or west will produce about ...

---

### How to Find the Best Orientation and Angle of Solar Panels?

Ideally, to optimize energy capture, you should put solar panels perpendicular to the sun rays to allow the solar panel to absorb as much radiant energy as possible, resulting in the highest production efficiency.

#### Commercial and Industrial ESS

Air Cooling / Liquid Cooling

- Budget Friendly Solution
- Renewable Energy Integration
- Modular Design for Flexible Expansion



---

### Best Angle And Orientation For Solar Panels - Forbes Home

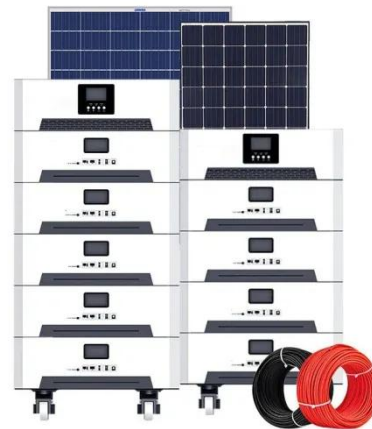
For most homeowners, the ideal angle for a solar panel installation is close to or equal to the latitude of your home. This angle is typically between 30 degrees and 45 degrees.



---

## Solar Panel Best Angle , Tilt & Orientation Guide 2025

By setting panels at the right angle, homeowners and businesses can maximize energy yield and ensure a faster return on investment (ROI). Another reason the angle is critical is seasonal sunlight variation. ...



---

## Solar Panel Direction & Orientation: 2025 Complete Guide

Discover the optimal direction and angle for solar panels to maximize energy output. Complete guide with calculations, tools, and location-specific recommendations for 2025.

---

## The Best Angle for Solar Panel Installation

In general, solar panels should be installed so the sunlight hits them at as close to a perpendicular 90-degree angle for as long as possible during the day. To achieve that goal, most solar panels ...



## Maximize Efficiency: Best Direction for Solar Panels , Sunrun

Solar panels are usually placed on your roof, preferably the side that gets the most direct sun. That's because even though panels will produce some energy whenever they face the sun, their placement ...

## What Direction Should Solar Panels Face? Understanding the Basics of

The optimal direction for solar panels to face is generally south in the Northern Hemisphere, as this orientation maximizes sunlight capture throughout the day, potentially increasing energy generation by up to 20%.



## Solar Panel Placement: Best



## Direction & Orientation Guide

Discover the optimal solar panel direction, placement & orientation to maximize energy efficiency. Boost savings with expert tips for an ideal setup!

---

### Best Direction for Solar Panels to Maximize Savings -- SolarReviews

While the tilt angle of your solar panel certainly plays a role in electricity output, it's essential that your array faces the right direction. For the ...



### What Is the Best Direction for Solar Panels?

While the tilt angle of your solar panel certainly plays a role in electricity output, it's essential that your array faces the right direction. For the best results, you should prioritize solar panel direction over solar ...

---

## Contact Us

For catalog requests, pricing, or partnerships, please visit:

<https://www.kidsandparents.pl>

