

# Wind power installation and commissioning of communication base stations



## Overview

---

This research underscores the crucial role of efficient communication infrastructure in modern power systems and presents a comprehensive approach that can be used to plan and operate both communication and power systems, ultimately leading to more resilient, efficient. This research underscores the crucial role of efficient communication infrastructure in modern power systems and presents a comprehensive approach that can be used to plan and operate both communication and power systems, ultimately leading to more resilient, efficient. 5G base stations (BSs), which are the essential parts of the 5G network, are important user-side flexible resources in demand response (DR) for electric power system. Improved Model of Base Station Power System for the. The optimization of PV and ESS setup according to local conditions has a. The invention provides a communication base station, which comprises: the omnidirectional antenna is fixedly arranged on the wind driven generator and is electrically connected with an internal circuit of the wind driven generator; the wind driven generator provides a vertical mounting support for. · Mobile phones and mobile devices require a network of radio base stations to function. This article aims to reduce the electricity cost of 5G base stations, and optimizes the energy storage of 5G base stations. Installation & Commissioning is a critical competency in the wind energy sector, ensuring that wind turbines and associated infrastructures are properly installed, connected, and ready for operational deployment. This competency plays a vital role in securing the safety, efficiency, and compliance. t) E rated. Can communication and power coordination planning improve communication quality of service?

Our study introduces a communications and power coordination planning (CPCP) model that encompasses both distributed energy resources and base stations to improve communication quality of service.

## Wind power installation and commissioning of communication base



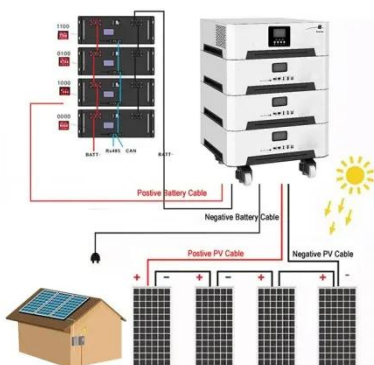
### Wind power installation requirements for communication base stations

This large-capacity, modular outdoor base station seamlessly integrates photovoltaic, wind power, and energy storage to provide a stable DC48V power supply and optical distribution.

### Wind power construction of communication base stations

We investigate the use of wind turbine-mounted base stations (WTBSs) as a cost-effective solution for regions with high wind energy potential, since it could replace or even outperform

CE UN38.3 MSDS



### Communication base station wind power installation and ...

This article aims to reduce the electricity cost of 5G base stations, and optimizes the energy storage of 5G base stations connected to wind turbines and photovoltaics.

## Construction and management of wind power for communication base stations

Can communication and power coordination planning improve communication quality of service? Our study introduces a communications and power coordination planning (CPCP) model that encompasses both ...



## Installation & Commissioning

Offshore Substation Supervisor - Wind Energy: Specializing in offshore installations, this supervisor oversees the installation and commissioning of electrical substations, a key element in connecting turbines to the grid.

## Installation and commissioning of energy storage for ...

The communication base station backup power supply has a huge demand for energy storage batteries, which is in line with the characteristics of large-scale use of the battery by the ladder, and



## Research on Capacity Optimization Configuration of Wind/PV

An individual base station with

wind/photovoltaic (PV)/storage system exhibits limited scalability, resulting in poor economy and reliability. To address this, a collaborative power supply scheme for ...



---

## CN111836120A

The invention relates to the technical field of communication, in particular to a communication base station.



---

## Construction standards for wind power at communication base ...

Research on Offshore Wind Power Communication System In view of the special needs of the communication system, a communication system scheme for offshore wind farms based on 5G technology is proposed.

---

## New base station for wind power communication

This research underscores the crucial

role of efficient communication infrastructure in modern power systems and presents a comprehensive approach that can be used to plan and operate both communication and ...



---

## Contact Us

---

For catalog requests, pricing, or partnerships, please visit:  
<https://www.kidsandparents.pl>

